



## Sports Grant Provision Mapping 2018-19

From September 2013 the government introduced Sports Funding for schools to invest in sustainable sporting activity or professional development for the staff.

The key priority is to increase the participation in sporting activities for our children and to get them interested in sport from a young age to support a healthy lifestyle.

Funding received £19,610

Estimated costs have been allocated in the following way.

### Additional Sports activities

**Overview:** provision of extra-curricular physical activities before school, during lunch breaks and resources as required.

**Cost** £ £2,580

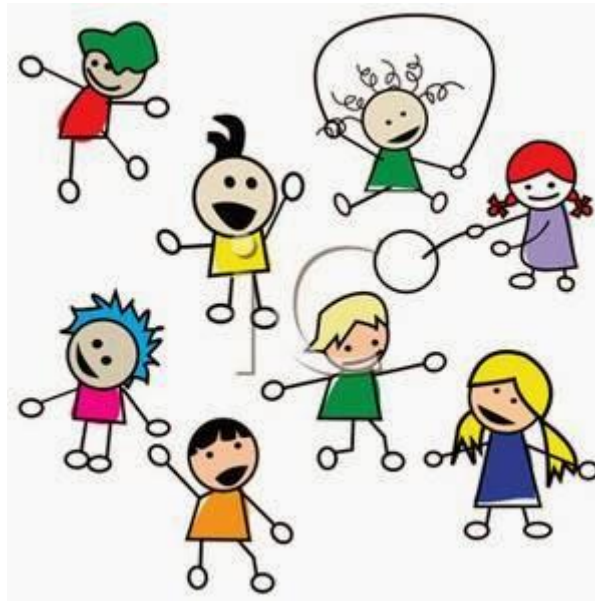
**Aim/outcomes:** pupils offered opportunities that promote and enable them to develop healthy and active lifestyles

### Participation in competitive sports events and competition

**Overview:** provision opportunities for pupils to take part in city wide events and competitions (including transport costs)

**Cost** £500

**Aim/outcomes:** pupils will be able to engage in competitive sports with other school and apply skills learnt in lessons and clubs to a specific sport.



Supporting the whole child

### High Quality PE lesson

**Overview:** provision of high quality PE staff to work alongside staff to up-skill their practice and incorporate assessment into subject.

**Cost** £ £6720

#### Aim/outcomes:

Staffs confidence will improve in delivering and assessing PE using FUNDAMENTALS scheme, and able to transfer skills learnt to own lesson delivery.

### Opportunities for outdoor PE lessons

**Overview:** provision of a safe area for outdoor PE. (3 year plan- 3 sections of yard)

**Cost** :: £10,000

#### Aim/outcomes:

Yard surface will be safe so that PE can take place outdoors (weather permitting)



## Impact Statement based on 2018-19 Sports Premium funding

- The school continues to participate in sporting competitions and festivals in school and beyond. For example, we took part in City Cross country competition and the skipping festival this year.
- KS2 Teacher's professional development, skills and confidence in delivering high quality PE provision continues to improve as a result of team teaching with specialist PE teachers. School staff deliver high quality follow on PE lessons each week.
- Pupil's skills have been assessed and data analysed for future developments.
- Increased activity in other curriculum areas including 'Outdoor classroom day.'
- Increased levels of activity at playtimes as a result of the investment in playground leaders and morning sports club.
- Additional sports offered (Athletics) both as lunchtime club and enrichment activities.
- Purchase of additional sport equipment to enhance provision (athletics equipment).